

INSIDE RING 60

AREND
INVESTING IN LIGHT

LED_Panel family IP20 IK03   T_a25     

**THE FAMILY OF SURFACE AND PENDANT MOUNTED PANEL OPERATING AT 60W,
220-240 VAC INPUT. DELIVERING OUTSTANDING PERFORMANCE OF 6000L**

Technical description

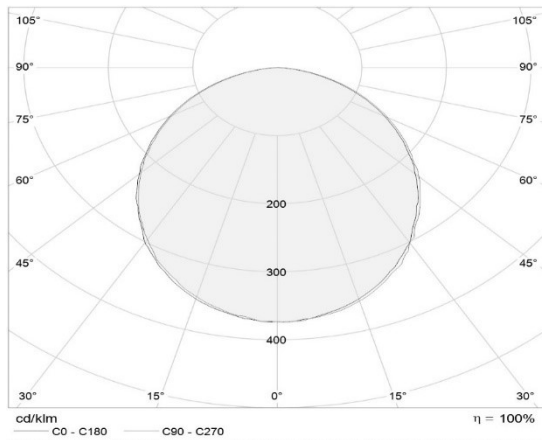
Luminaire was designed to be used white LEDs for illumination purposes can be surface and pendant mounted, Wide and uniform light distribution for decorative application. Down light luminaire with 60 w, 3000-6000 kelvin LEDs for indoor applications. Robust luminaire housings made from iron cast, Diffuser is polycarbonate. All LEDs are within a three step Macadam ellipse to ensure color consistency. Energy saving is up to 90% in comparison with traditional light sources. Can be fitted as recessed, pendant or surface luminaire using special accessory.

Standard Diameters: 60 & 90 & 120cm

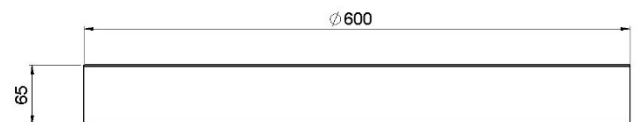


Application

- Office
- Education
- Exhibition
- Hospital



Correlated color temperature: 3000-4000-6000 kelvin
Rated median useful life: 50000h L70 at 25°C
Luminaire input power: 60w



Dimensions: Φ 600 x 65 mm
Total power: 60w
Luminaire luminous flux: 6000lm
Luminaire efficacy: 100 lm/w
Weight: 3 kg

Mounting and installation

Surface and pendant mounting with special accessories to be ordered