

# MAGNETAR LINEAR

LED\_Low voltage family IP20 IK05    $T_a 25$     

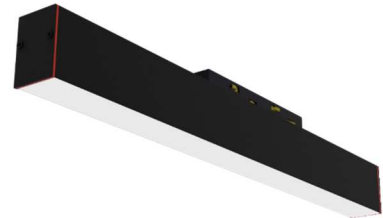
**The Family of Magnetar Linear LED Operating at 12 w, 48 VDC input. Delivering outstanding performance of 1200 lm/m**

## Technical description

Magnetic track linear luminaire makes an impact with their streamlined design and generate base lighting that illuminate's objects and rooms especially evenly. Body material is extruded aluminum and diffuser is polycarbonate. Quick installation system on the track using magnets. Class I electrical, IP20 (IP44 only for option). Total power: 12 w.

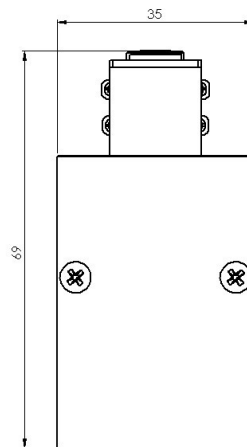
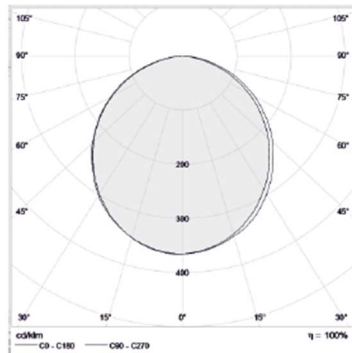
(DALI control an option only).LED color temperature is 3000 – 6000kelvin.Chromaticity tolerance(initial MacAdam:3).Color rendering  $R_a > 80$ .

This product can be produced in 400 , 600 , 800 and 1000 mm.



## Application

- Decorative •
- Art gallery •
- Hotel •
- Office •
- House •



Correlated color temperature: 3000 – 6000 kelvin  
Rated median useful life: 50000h L70 at 25°C  
Luminaire input power: 12 w

Dimensions: 35 x 69 x 400 mm (600, 800, 1000 mm)  
Total power: 12 w (18, 24, 30w)  
Luminaire luminous flux: 1200 lm (1600, 2400, 3000 lm)  
Luminaire efficacy: 100 lm/w  
Weight: 1.4 kg

## Mounting and installation

Quick installation system on the magnetar track using magnets, that embedded in luminaire