

BAHAR L

LED_Downlight family

IP20

IK03



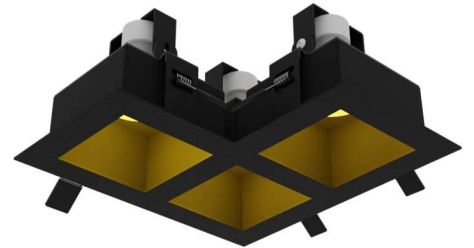
T_a25



**FAMILY OF DEEP RECESSED, LED MULTI DOWNLIGHT OPERATING AT 3 * 7 W.
220-240 VAC INPUT.**

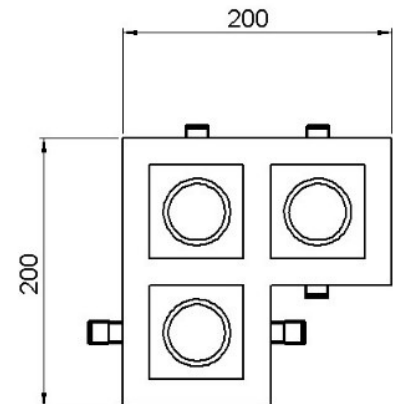
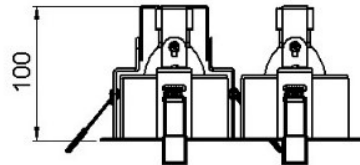
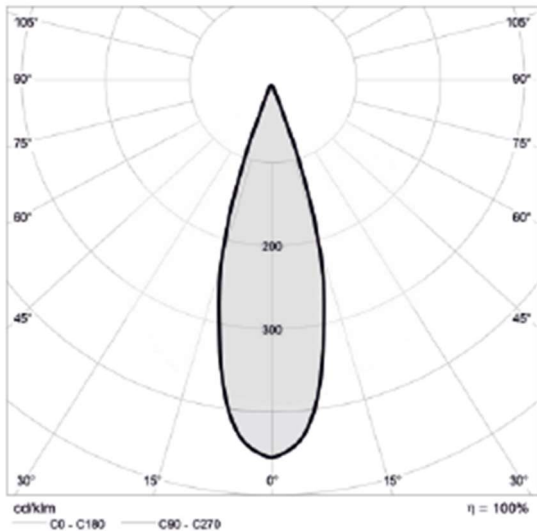
Technical description

The range of recessed boxed downlights is available in singular, twin or triple variants. Providing a fix lighting solution. In the box are lamp holders for use with halogen or LED lamps and easy clip lamp. The body material is made of an iron sheet. Total power: 3x Gu10 (7w) (each light source). Color temperature is 3000-6000 kelvin. Color rendering index: Ra >80.



Application

- Restaurant
- Hotel
- Retail



Correlated color temperature: 3000 – 6000 kelvin
Rated median useful life: 50000h L70 at 25°C Luminaire
input power: 3 x 7 w

Dimensions: 200 x 200 x 100 mm
Total power: 3 x GU10 (7w)
Weight: 1.4 kg

Mounting and installation

Suitable for indoor recessed, ceiling mounting, Simple installation with fitting springs.
Cut out dimension: 190 x 190.