

LED_downlight family

IP20

IK05



T_a25



THE FAMILY OF PENDANT AND SURFACE OPERATING AT 20W, 220-240 VAC INPUT. DELIVERING OUT STANDING PERFORMANCE OF 2200LM.

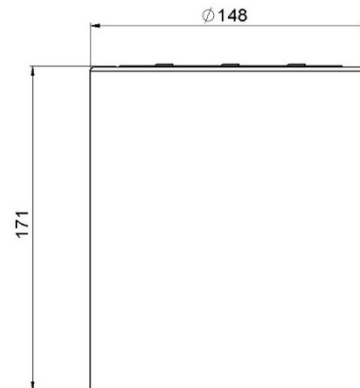
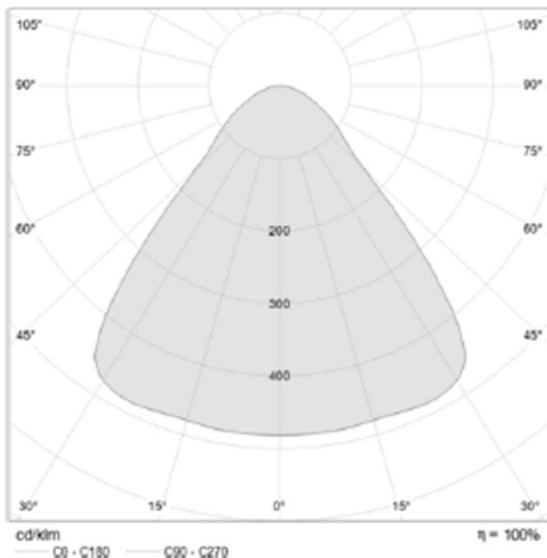
Technical description

A pendant and surface downlight LED luminaire, to use a dark light dome where need emotional and sense luxury. Body: anodized aluminum (powder coating an option), Reflector made of pure anodized aluminum. Total power :20w, slave luminaries for DAU control (an option only) with led converter. Chromaticity tolerance (initial MacAdam:3). Color rendering Ra>80, color temperature 3000-6000k.



Application

- Coffee shop
- Restaurant
- Decorative



Correlated color temperature: 3000-6000 kelvin
 Rated median useful life: 50000h L70 at 25°C
 Luminaire input power: 20 w

Dimensions: Ø148 x 171 mm
 Total power: 20 w
 Luminaire luminous flux: 2200 lm
 Luminaire efficacy: 110 lm/w
 Weight: 2 kg

Installation and Mounting

Pendant and surface the luminaire from the ceiling with special accessories is in the luminaire case.